



Osprey House

Sowton, Exeter EX2 7WN



PEARCE
PROPERTY CONSULTANTS
07971 278 386

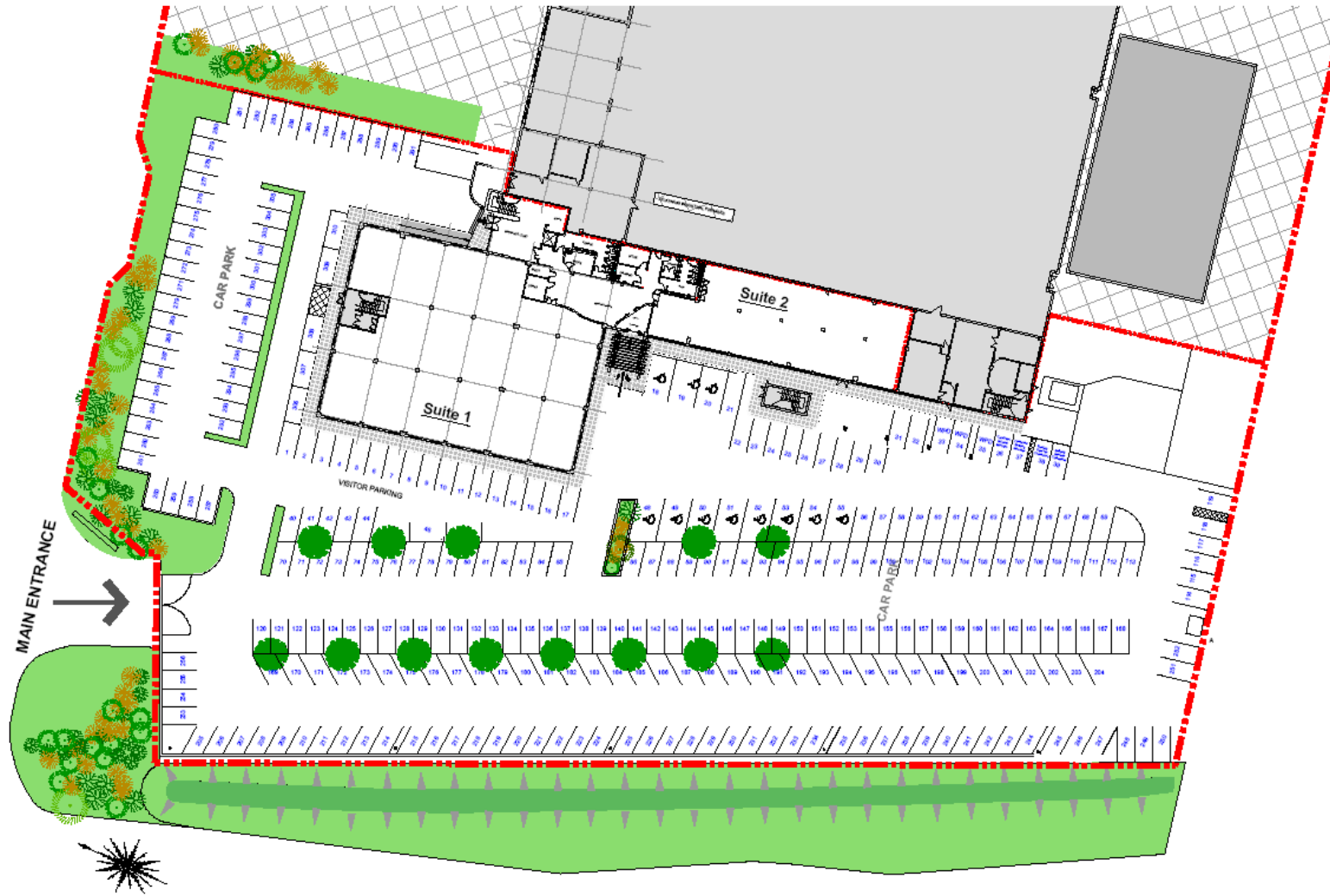


JLL®
01392 423 696
jll.co.uk/property



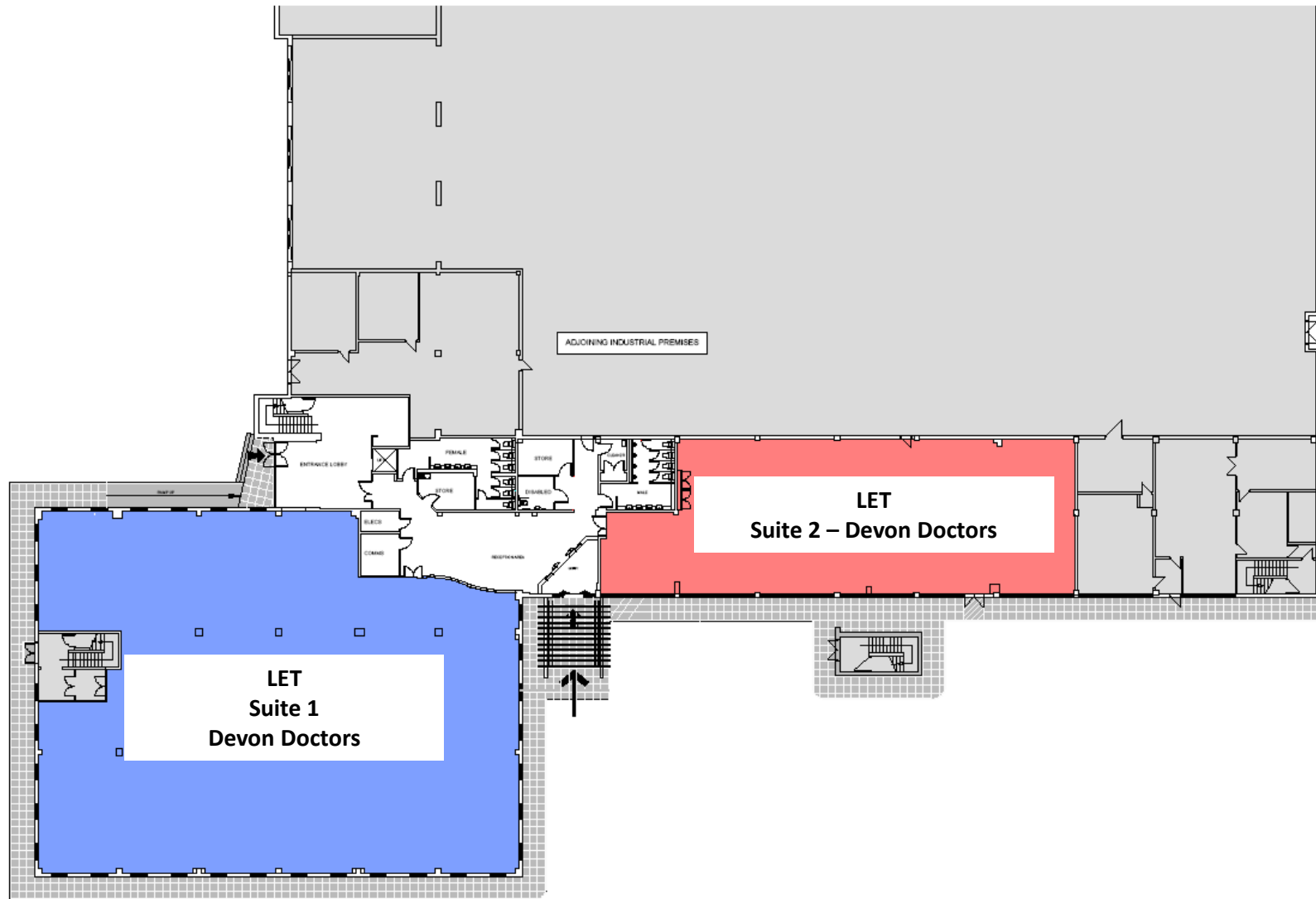
Osprey House
Main Entrance





Osprey House

Site Plan



Osprey House

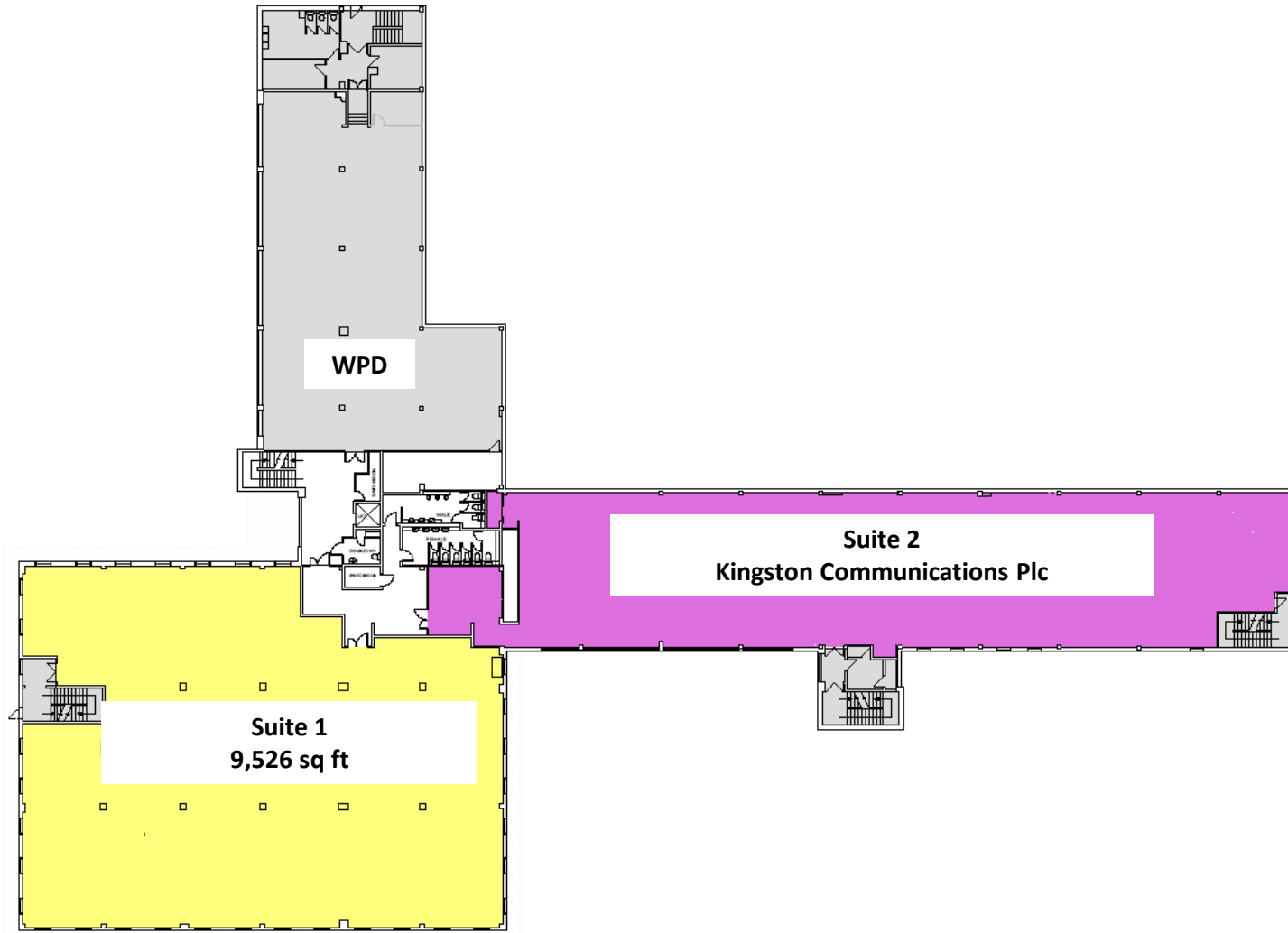
Ground Floor Plan



Osprey House

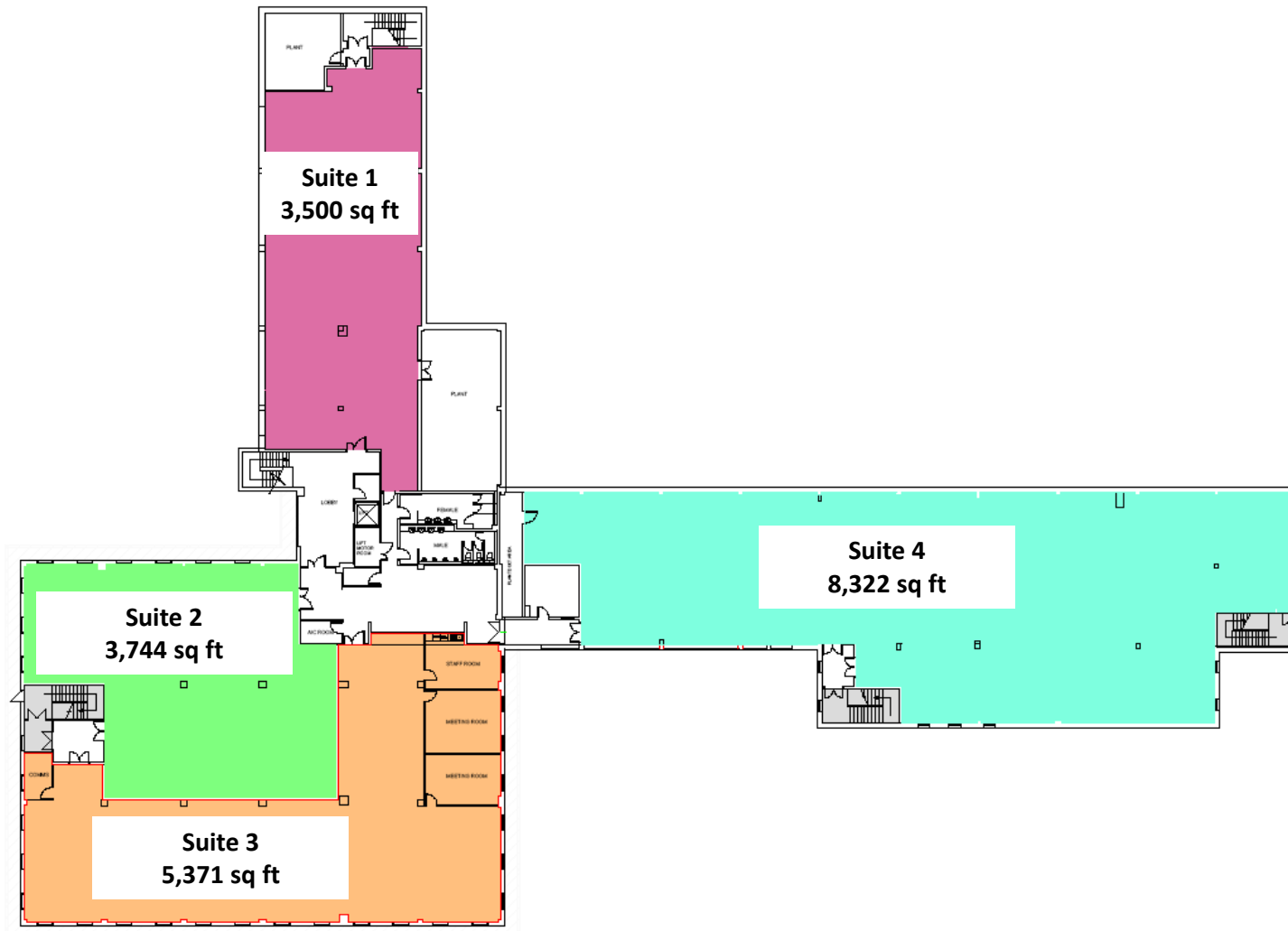
Ground Floor Suites





Osprey House

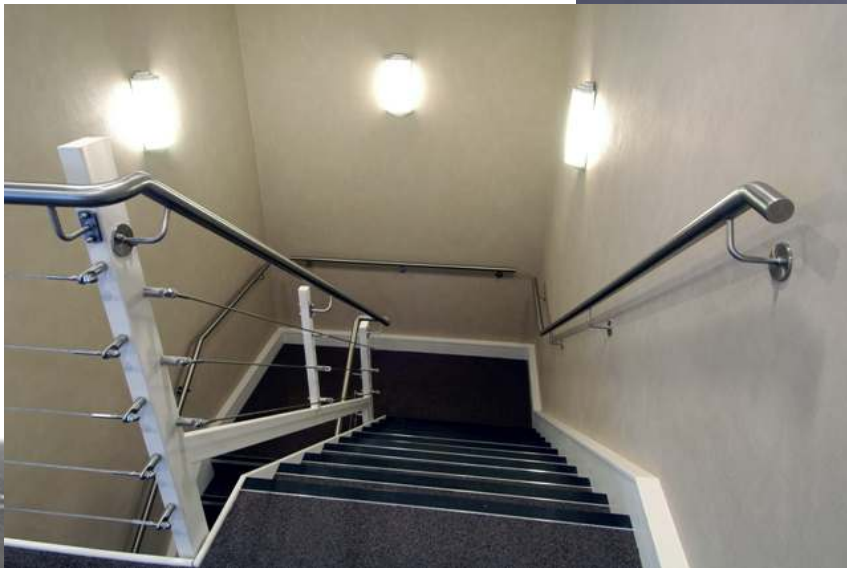
First Floor Plan



Osprey House

Second Floor Plan

Occupier	Location	Refurbished		Parking Spaces
		Let	Available	
Devon Doctors	Ground Floor North Suite 1	Let		
Devon Doctors	Ground Floor Suite 2	Let		
Vacant	First Floor North Suite 1		9,526 sq ft	57
Kingston	First Floor South Suite 2	Let		
WPD	First Floor East Suite 3	Let		
Vacant	Second Floor East Suite 1		3,500 sq ft	18
Vacant	Second Floor North Suite 2		3,744 sq ft	19
Vacant	Second Floor North Suite 3		5,371 sq ft	35
Vacant	Second Floor South Suite 4		8,322 sq ft	40
TOTALS			30,463 sq ft	169



Osprey House
Second Floor Suite


PEARCE
PROPERTY CONSULTANTS
07971 278 386


01392 423 696
jll.co.uk/property



Osprey House

Main Reception and Core



Osprey House
Toilet Facilities





Osprey House

Externally



Osprey House

Sowton, Exeter EX2 7WN



Andrew Pearce
andrew@pearceproperty.com
www.pearceproperty.com



Kye Daniel
kye.daniel@eu.jll.com

DISCLAIMER
The material herein is intended as a guide only, no liability for negligence or otherwise is assumed for the material contained herein by Jones Lang LaSalle, its principal or its servants or its agents. No material contained herein shall form the basis of or be part of any agreement and no warranty is given or implied as to the accuracy of the whole or any part of the material. Prospective purchasers/tenants should not rely on the material but should make their own enquiries and satisfy themselves of all aspects of the material. Any liability by Jones Lang LaSalle, its principal, its servants or its agents in any way connected with the brochure, whether or not such liability results from or involves negligence, will not exceed \$1000.00.