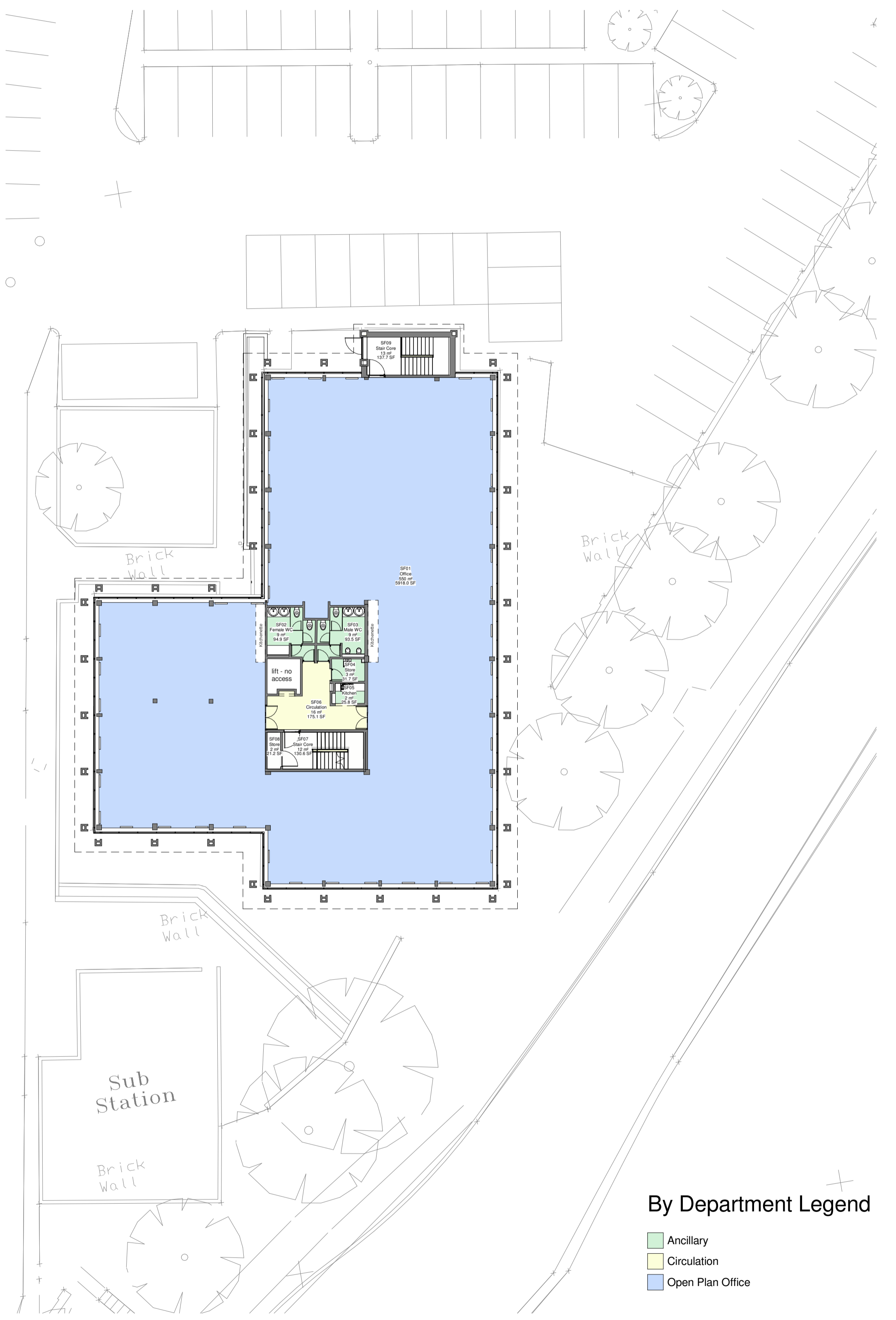
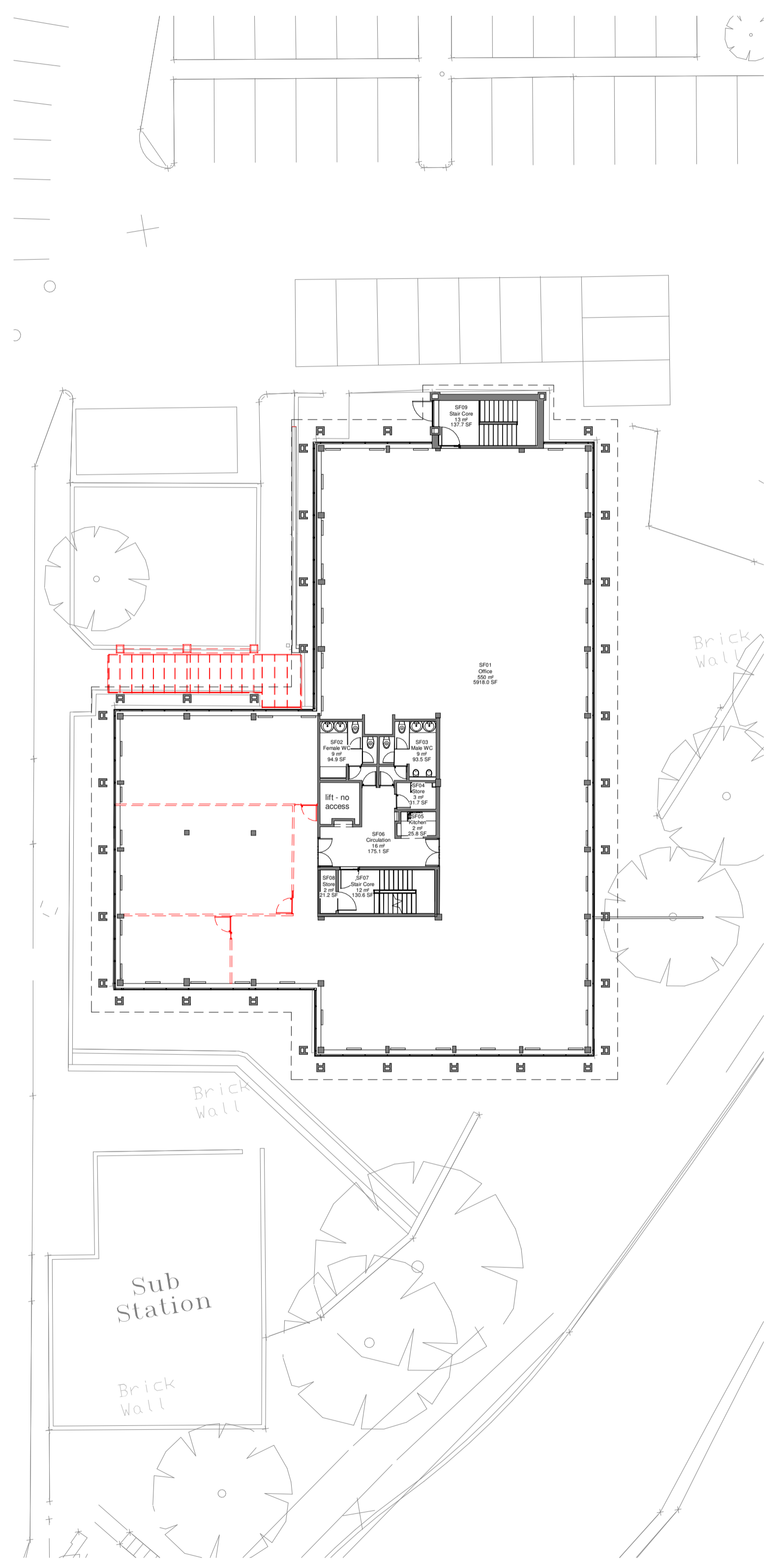
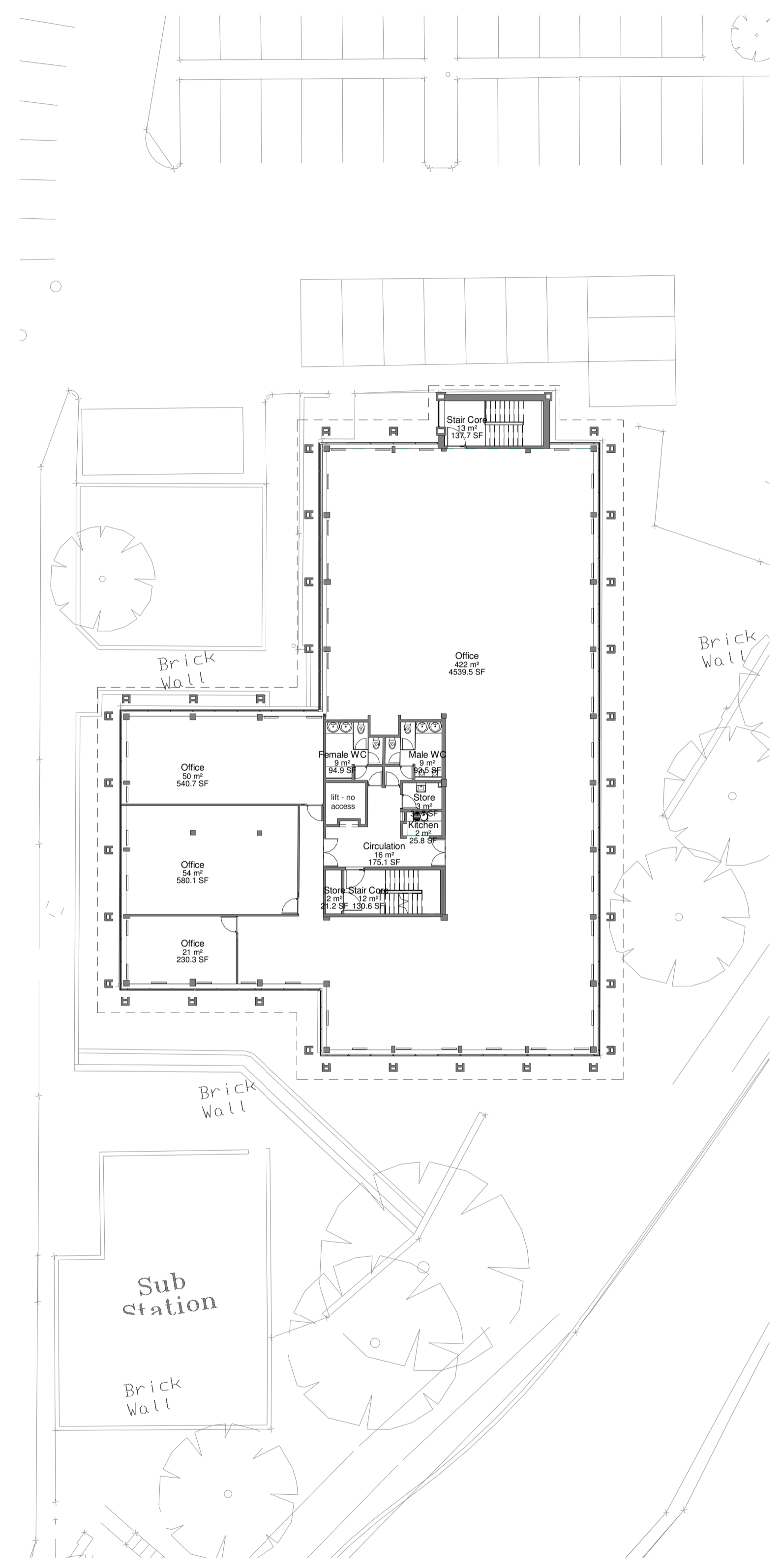


Contractors to check all dimensions on drawings.
 Any discrepancies must be reported to KTA Architects Ltd or the contract administrator before proceeding.
 Scale for planning purposes only.
 This drawing must be read in conjunction with all relevant consultants drawings.
 This drawing is © KTA Architects Ltd.

| Revision Schedule | | | |
|-------------------|---------------|---|-----------------------|
| Revision Number | Revision Date | Revision Description | Issued/ Authorised by |
| E | 22.12.21 | Revised as per comments | SC/AS |
| D | 13.10.21 | Amended plan to show new office layout proposal | KA |
| C | 30.09.21 | Warehouse Extensions Removed | KA |
| B | 05.05.20 | Scale bar and sheet notes amended | EM |
| A | 27.03.20 | Planning Application | EM |



1 Existing Second floor
1 : 200

2 Demolition Second Floor
1 : 200

3 Proposed Second Floor
1 : 200

By Department Legend

- Ancillary
- Circulation
- Open Plan Office

KEY
 Existing
 Demolition
 Proposed



B
 BURREINGTON
 ESTATES

05_BROOK HOUSE

KTA
 Architects | Urban Designers

Kensington Court, Woodwater Park, Pynes Hill, Exeter, EX2 5TY
 Tel: 01392 360338
 Email: kt@kta.uk.com
 Web: www.kta.uk.com

Project
 Winslade Park
 Brook House

Title
 Second Floor Plan

Concept Author EM Checked by AS/KT

Date 15/02/2022 12:17:57 Scale 1 : 200 @ A1

Project 1932 Status Pre Construction

Drawing number
 WP-KT-05-03-M3-A-1932-L02.03-S0-E

OMF 73 - Issue 2 - 26/11/18

